

User Manual



Offset Cantilever Umbrella

PRODUCT CODE: R3-3x4-C



Thanks for choosing SORARA products. We'd love to hear your thoughts and comments.

If you are satisfied with our products and service, please let us know.

If you have questions or feedbacks, we are here to help !

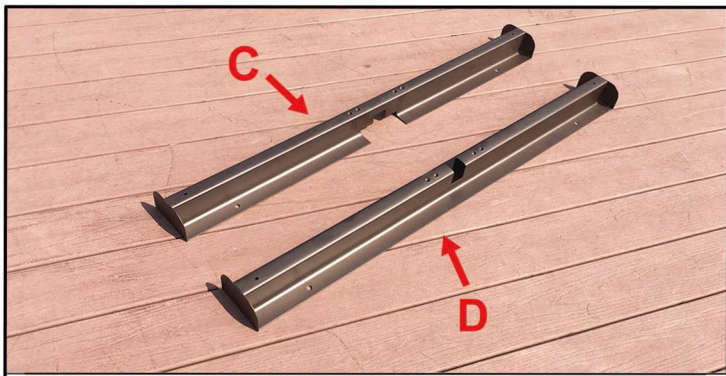
✉ info@sorara.eu

🖥 www.sorara.eu

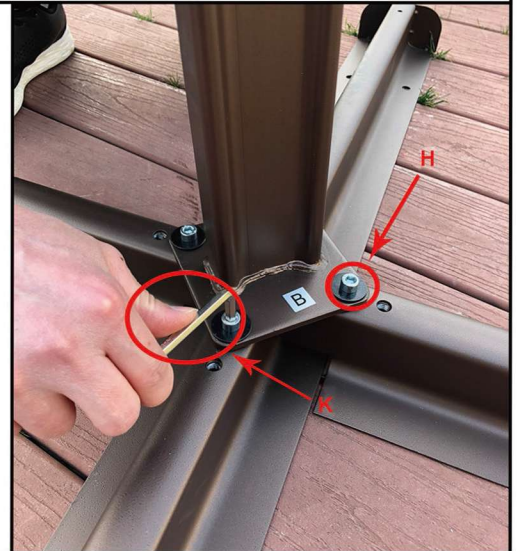
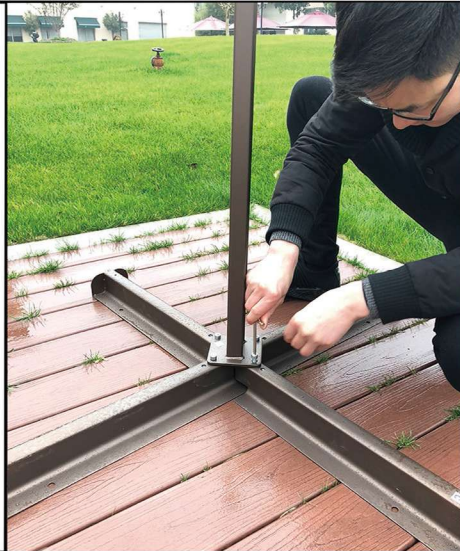
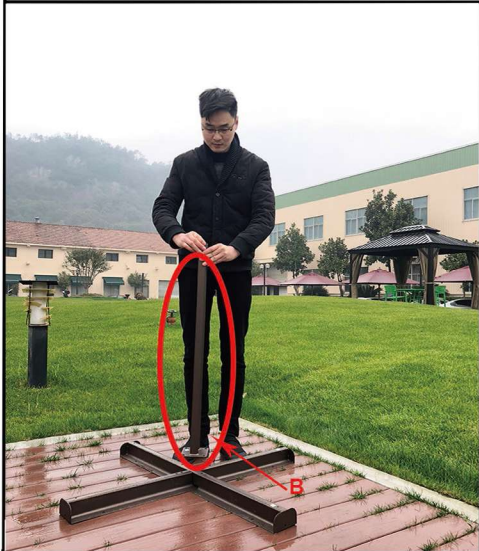


Umbrella supplied is fully assembled. Please read instructions prior installation. Take all parts out of the box. If any parts are missing, please do not return to the place of purchase directly. Please email us first info@sorara.eu

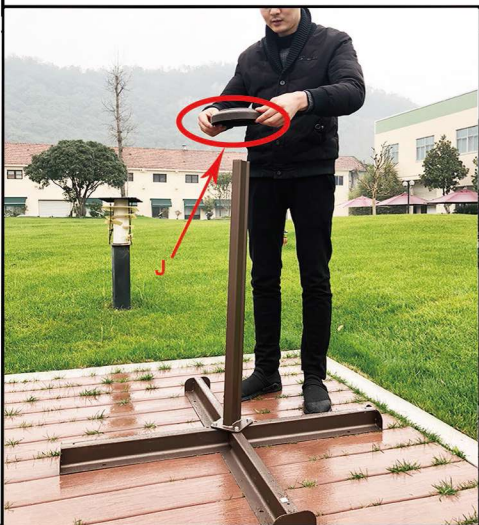
No.	Qty	Photo
A	1PC	
B	1PC	
C	1PC	
D	1PC	
E	1PC	
F	2PCS	
G	1PC	
H	6PCS	
I	9PCS	
J	1PC	
K	1PC	



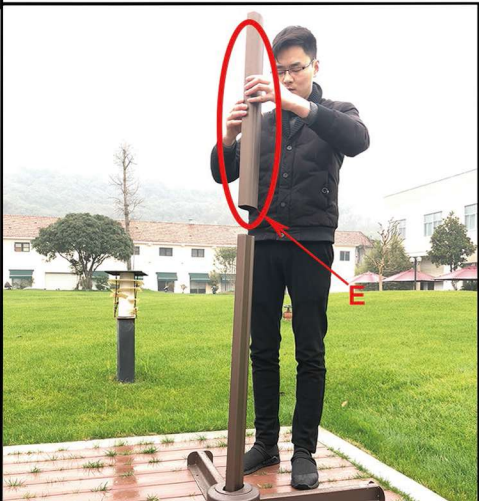
Step1. Place the upper cross leg (C) over the lower cross leg (D) to form a '+'.¹



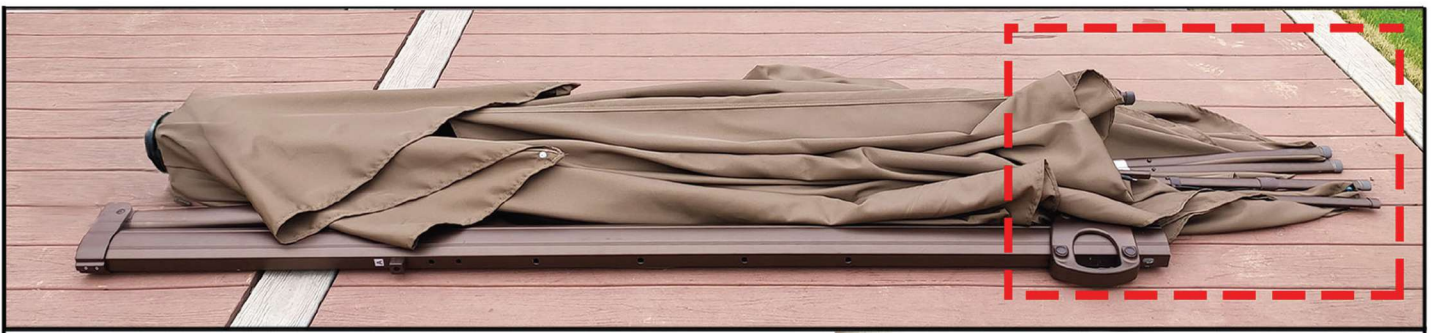
Step2. Place the tube (B) onto the cross with 4 bolts (H), tighten bolts with part (K).



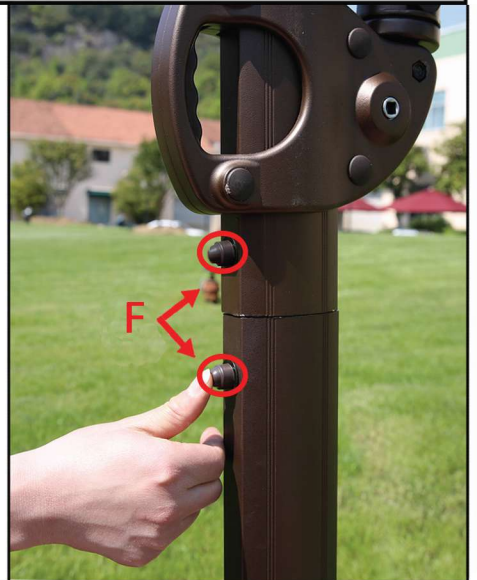
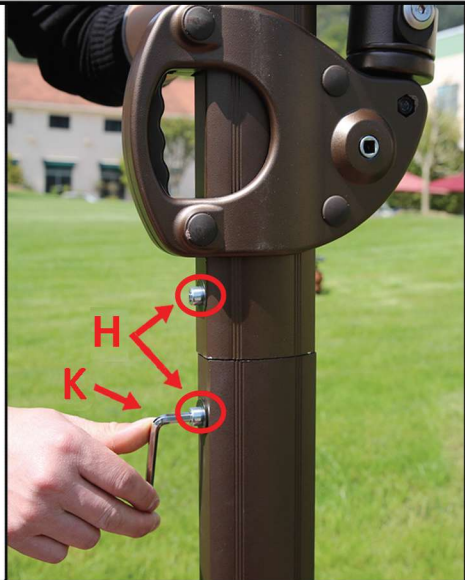
Step3. Place part (J) on the tube (B).



Step4. Insert the pole (E) onto the tube (B).



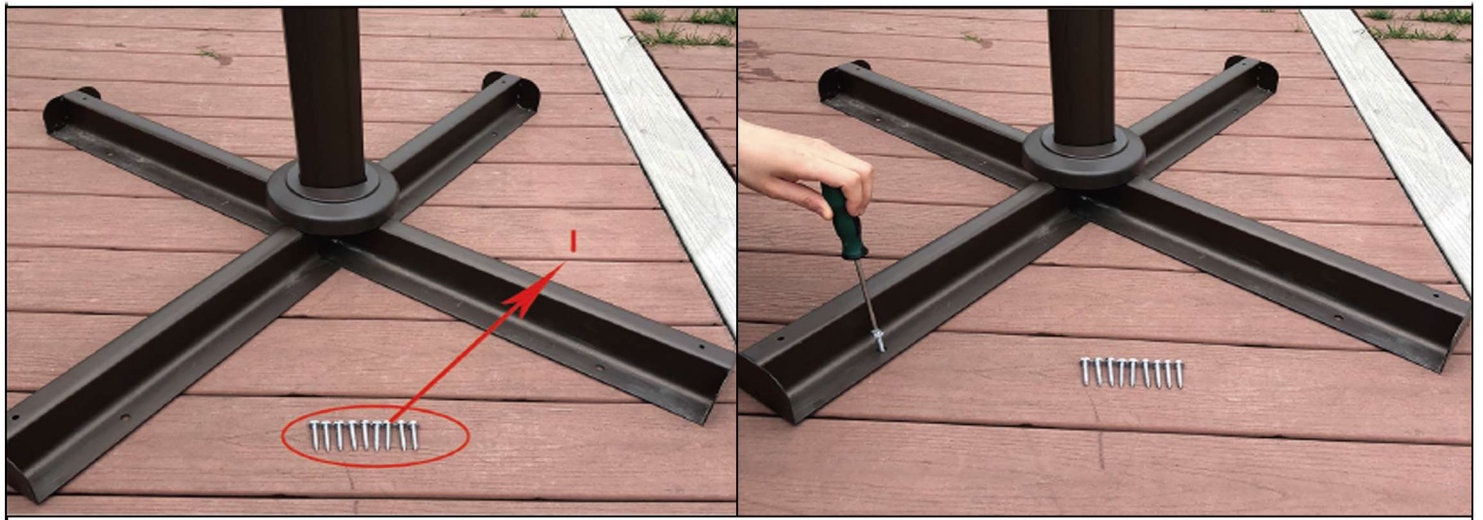
Step5. Connect each of the ribs to the four long ribs and tighten the screws.



Step6. Place Part (A) onto the assembled cross base. Connect Part (A) and Part (B) with 2 bolts (H). Cover caps (F) on those bolts.



Step7. Insert handle (G) to open the umbrella. Set the umbrella to 5 adjustable vertical tilt position by sliding sleeve.



Option: If the umbrella is used on the wooden deck, tighten the screws (I) with the base and the deck to keep the umbrella stable.