

# User Manual



## 3x3 PORTA-POP INSTANT CANOPY



**Thank you for purchasing Sorara's Porta-Pop™ canopy !**

**We have learned from our customers that having an easy way to shade from the sun is very important, and sometimes you need to take it with you. Sorara's design team continues to develop durable long-lasting outdoor patio furniture, canopies, and shelters. The all-new Porta-Pop™ instant canopy is another notable achievement. It is perfectly designed to provide extra shade that is portable, spacious, reliable, and easy to assemble for all your outdoor activities.**

**We'd love to hear from you and we welcome your feedback/suggestions.  
If you have a general question, we are always here to help.**

 **Email: [info@sorara.eu](mailto:info@sorara.eu)**

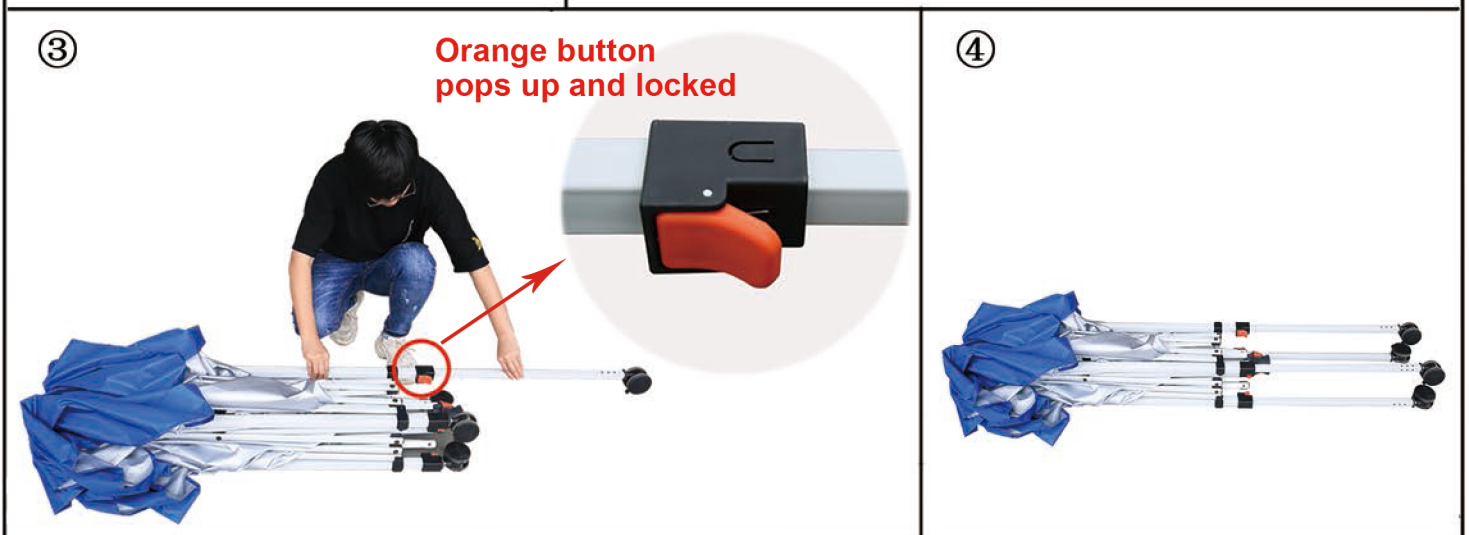
 **Web: [www.sorara.eu](http://www.sorara.eu)**

PART	QTY	DESCRIPTION	PHOTO
A	1PC	BAG	
B	1PC	FRAME	
C	1PC	COVER	
D	8PCS	SPIKE	
E	4PCS	DRAWSTRING	
F	4PCS	BUNGEE	



Step 1. Rmove the bag, half-open the frame (Part B).

Step 2. Place the cover (Part C) over the frame (Part B), and attach two parts with the velcors in four corners.



Step 3. Extend leg until the orange pops and locked.

Step 4. Extend all 4 legs.

⑤



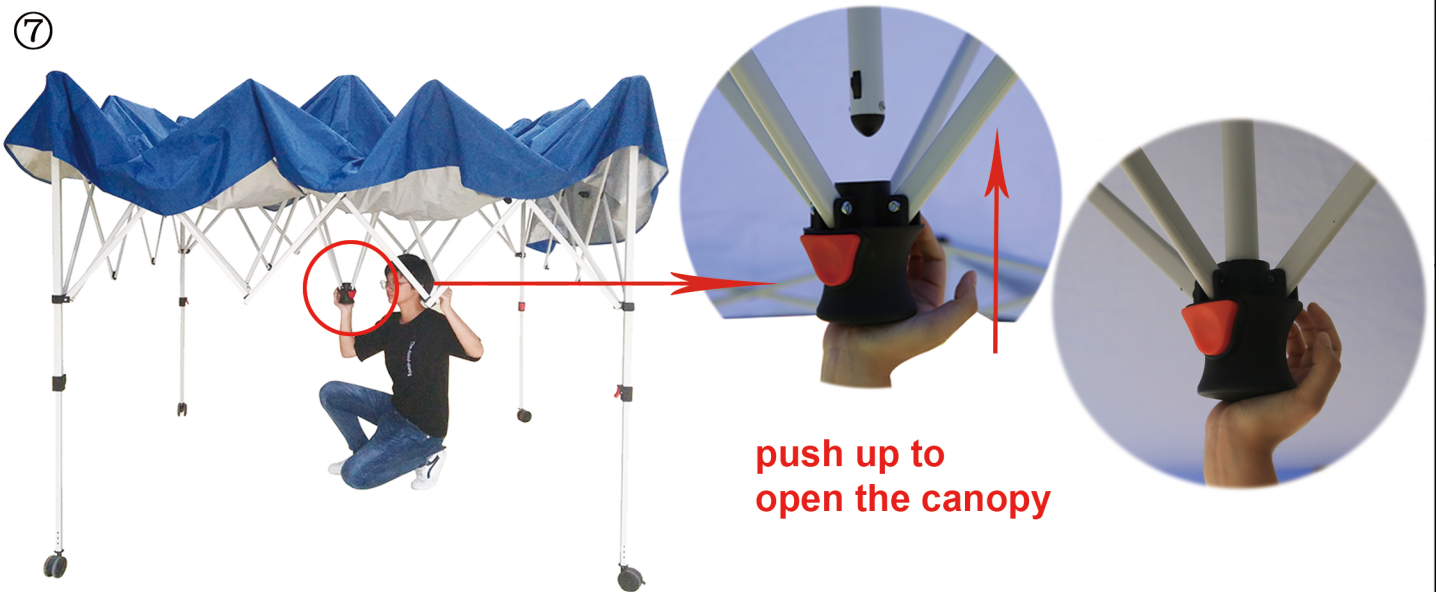
Step 5. Stand the canopy up.

⑥



Step 6. Half- open the frame with cover.

⑦



push up to open the canopy

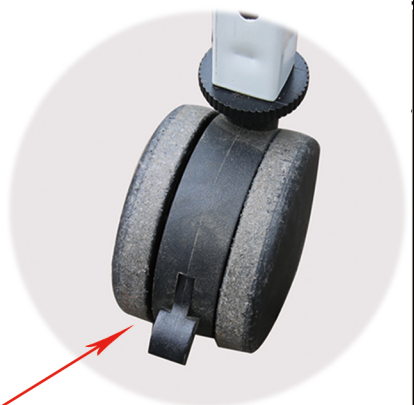
Step 7. Push up the canopy with middle plate.

⑧



Press orange button to adjust height

⑨

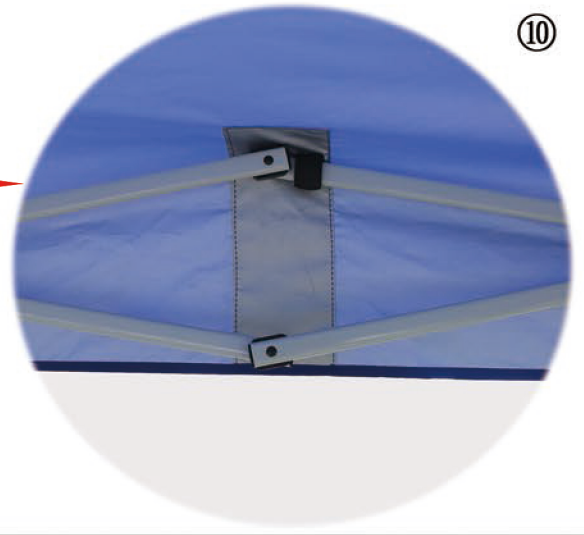


lock 4 wheels to prevent movement

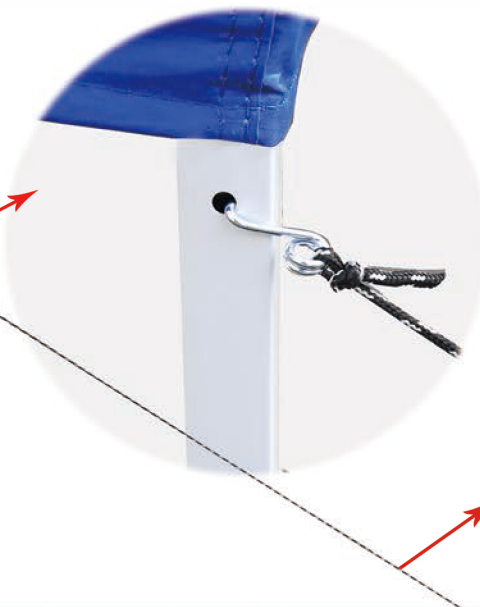
Locked

Step 8. Press orange button to adjust height, there are 4 height options to choose from.

Step 9. Lock 4 wheels to prevent movement when installed.



Step 10. Attach all 8 velcro strips to the frame.



Step 11. If using in a grassy area, hook drawstring (Part E) in the holes on the frame. Use spike (Part D) to secure to the ground with the rope tied to the spike.

12



Step 12. Use bungee (Part F) to hold the wheels and secure with spike (Part D) in ground. Using both bungee and spike at each leg will help secure the canopy in place.



**Step 13.** When not in use, pls press middle orange button to close.



**Step 14.** Make frame smaller.



**Step 15.** Press the orange button to shrink the leg.



**Step 16.** Shrink all four legs.



**Step 17.** When not in use or storing outside, use the carry bag (Part A) to protect.



18



19

**Step 18. Plug the buckle.**

**Step 19. Zip up the bag.**



20

**Step 20. Easy to carry with push and pull functions.**