

# Instruction Manual



## Moveable Umbrella Base



If you are satisfied with this product, please let us know. If you have questions, we're always here to help! You know the strenght of social media nowadays and we would appreciate a positive review on the website of your purchase. We appreciate the time you have taken and will actively use it to improve our products and service to you. Please, visit our website [www.sorara.eu](http://www.sorara.eu) for more information about our products and where you can purchase them.



**A 1PC**

**B 2PCS**

**C 2PCS**

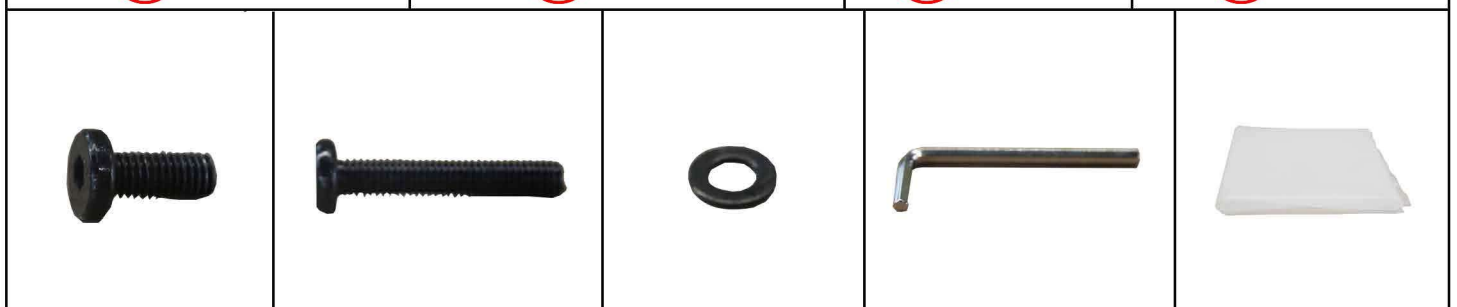


**D 1PC**

**E 1PC**

**F 1PC**

**G 1PC**



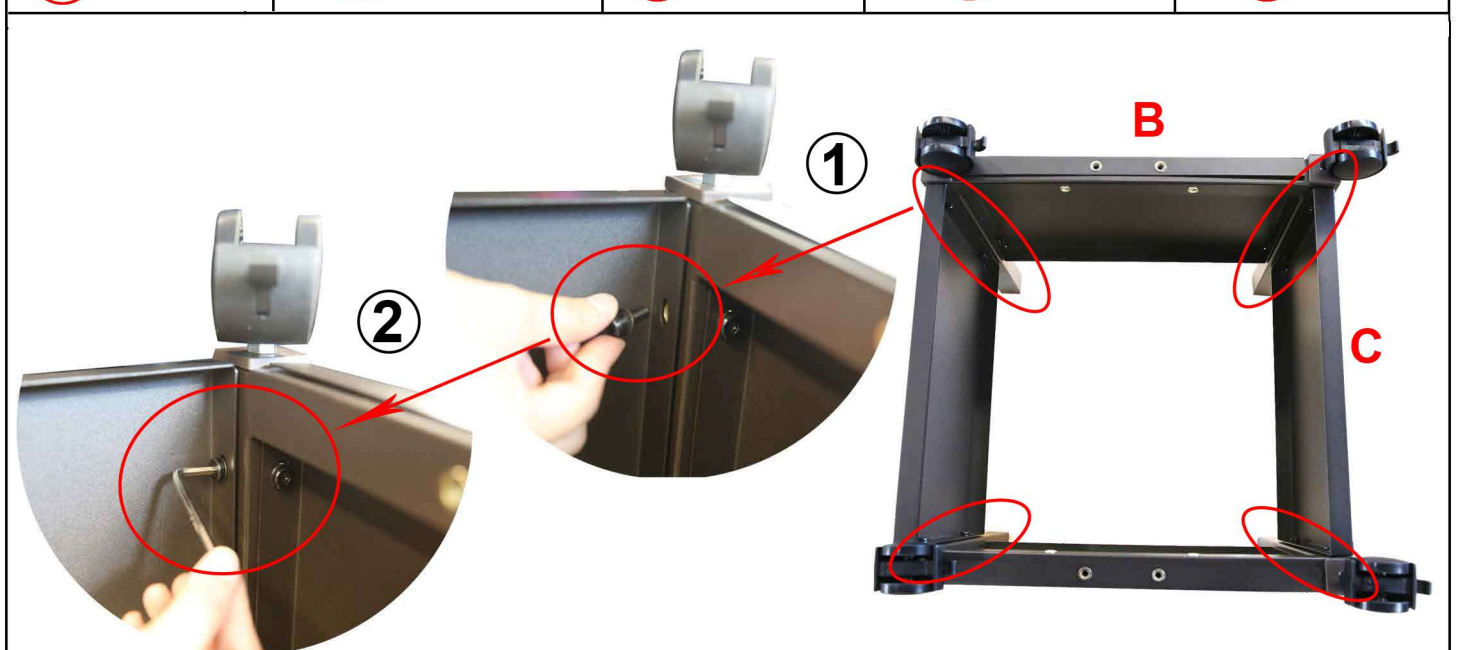
**H 16PCS**

**I 4PCS**

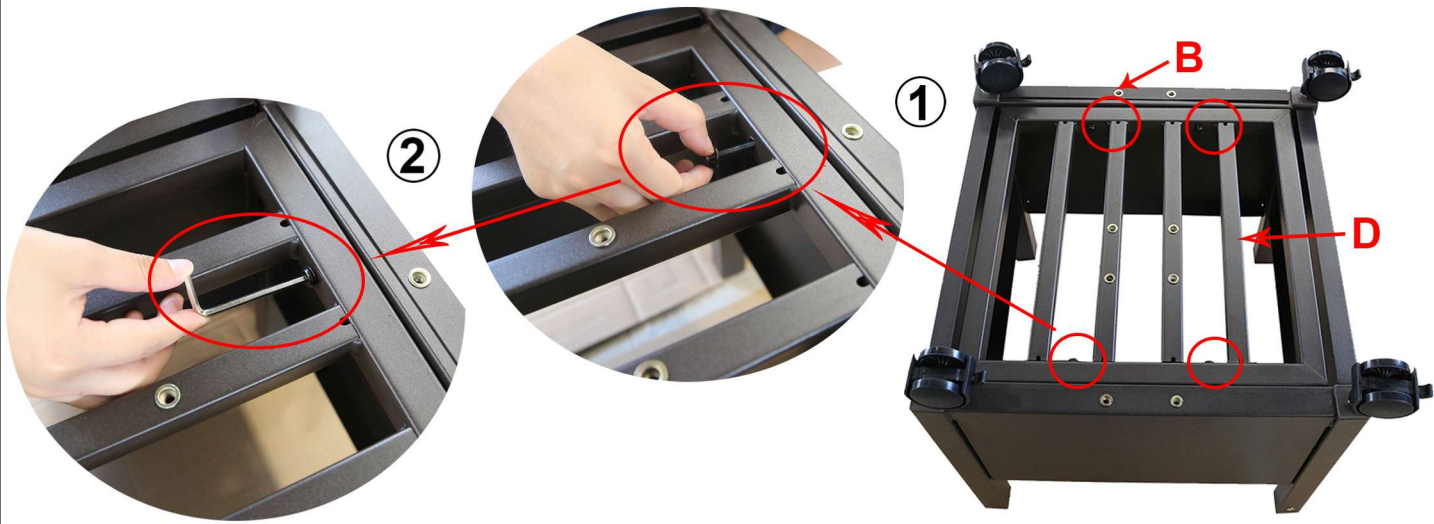
**J 22PCS**

**K 1PC**

**L 1PC**



**Step1. Connect Part (B) and Part (C) by screws (H) and washers (J) . Tighten the screws with wrench (K).**



**Step2. Connect Part (B) and Part (D) by screws (I) and washers (J). Tighten the screws with wrench (K).**

**Option one:**



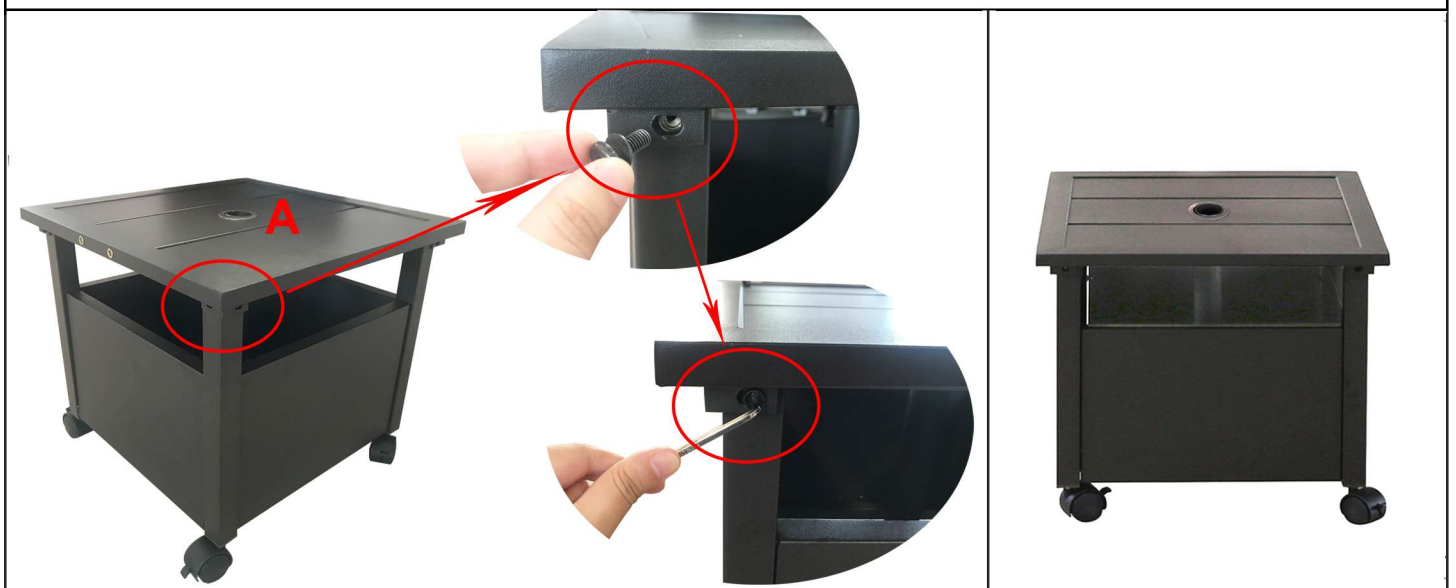
**Step3. Put the tube (E) in the middle of the frame. Connect the two parts with screws (H) and washers (J).**



**Step4. Fill the plastic bag (L) with sand. Seal it with stapler or tape.**



**Step5. Put the sandbags to increase the base weight.**



**Step6. Fix the top cover (A) and the assembled base together with screws (H) and washers (J).**

## **Option two:**



**Step3. Put the tube (E) beside the frame. Connect the two parts with screws (H) and washers (J).**



**Step4.** Fill the plastic bag (L) with sand, seal it with stapler or tape.



**Step5.** Put the sandbag to increase the base weight.



**Step6.** Fix the top cover (A) and the assembled base together with screws (H), washers (J) and part (F).

**Scenario 1**



**Scenario 2**

