

# User Manual



## Offset Cantilever Umbrella

PRODUCT CODE: R3-300x300



Thanks for choosing SORARA products. We'd love to hear your thoughts and comments.

If you are satisfied with our products and service, please let us know.

If you have questions or feedbacks, we are here to help !

✉ [info@sorara.eu](mailto:info@sorara.eu)

🖥 [www.sorara.eu](http://www.sorara.eu)

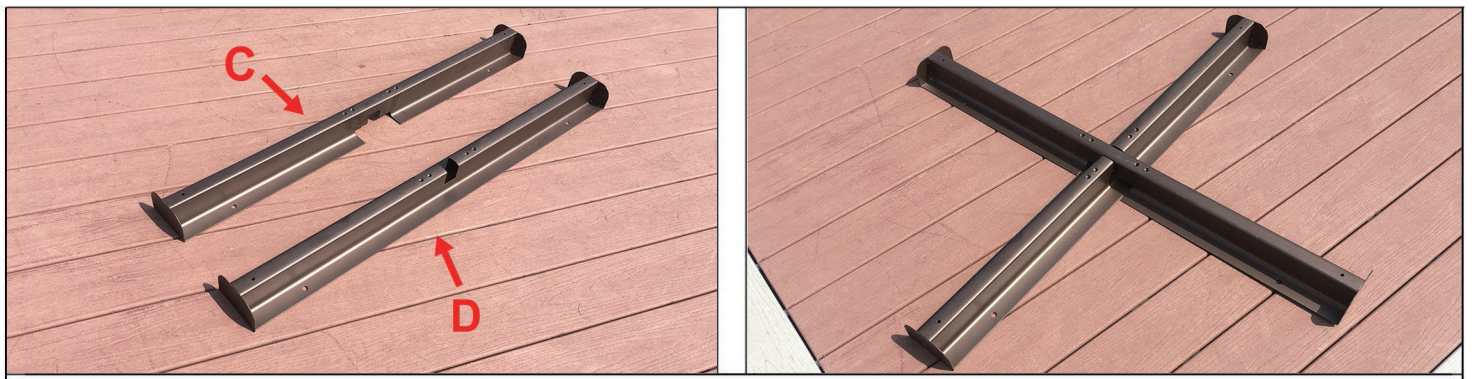


→ Triangle base sells separately

Umbrella supplied is fully assembled. Please read instructions prior installation. Take all parts out of the box. If any parts are missing, please do not return to the place of purchase directly. Please email us first [info@sorara.eu](mailto:info@sorara.eu)

NO	QTY	PHOTO
A	1PC	
B	1PC	
C	1PC	
D	1PC	
E	1PC	
F	1PC	
G	2PCS	
H	2PCS	
I	4PCS	
J	4PCS	
K	1PC	
L	1PC	
M	1PC	
N	9PCS	

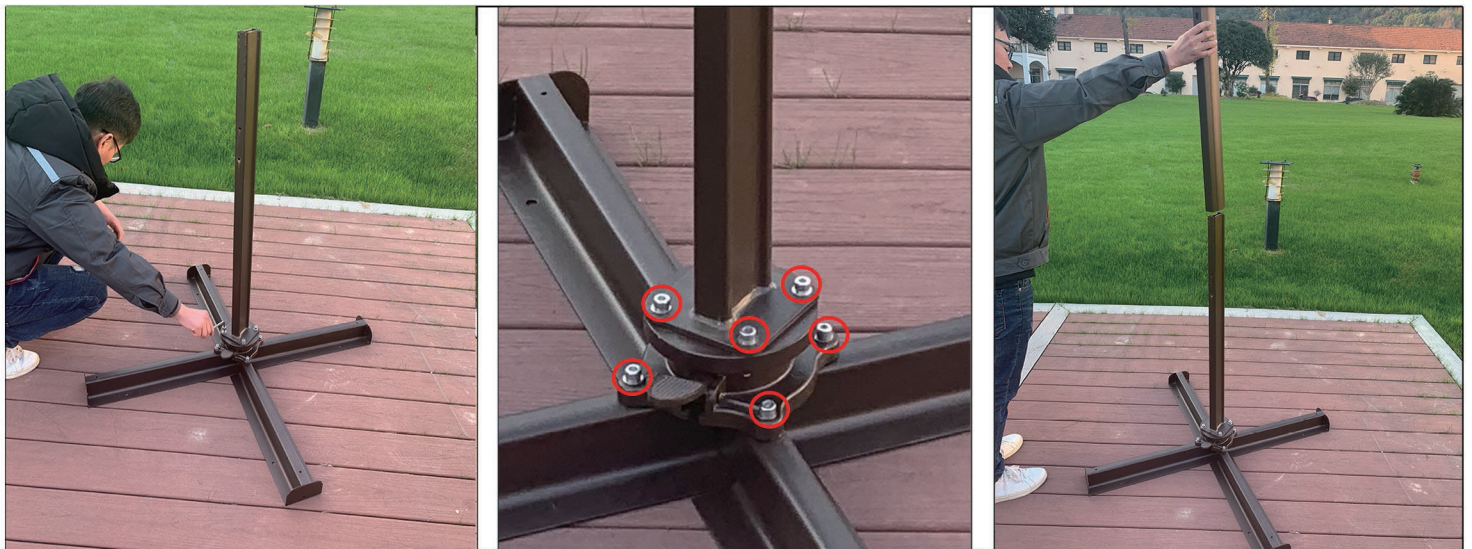




Step1. Place the upper cross leg (C) over the lower cross leg (D) to form a '+'.



Step2. Place the rotating device (F) onto the cross base with bolt (J), tighten the bolt with cross base.

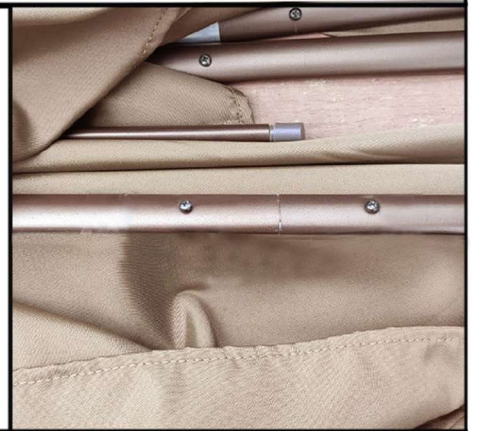


Step3. Place the tube (B) onto the rotating device with bolt (I). Pay attention to screw hole position.

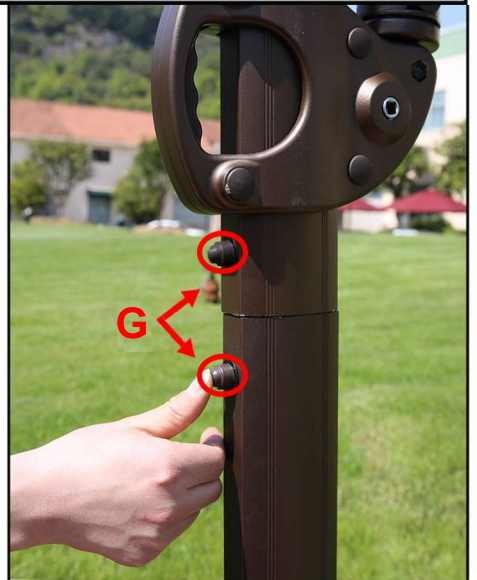
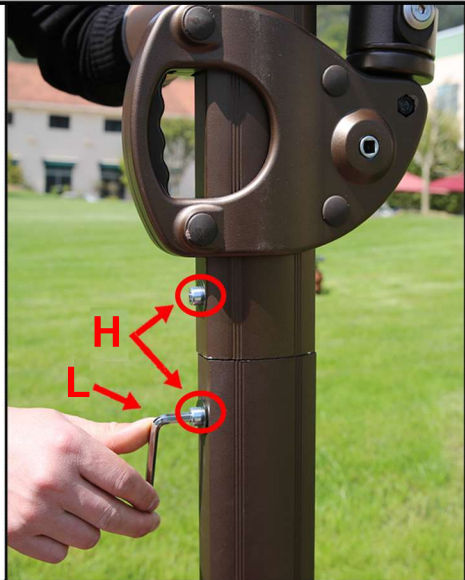


Step4. Insert the pole (E). Place part (K) on the pole (E).





**Step5. Connect each of the ribs to the four long ribs and tighten the screws.**



**Step6. Place Part (A) onto the assembled cross base. Connect Part (A) and Part (B) with 2 bolts (H). Cover caps (G) on those bolts.**



**Step7. Insert handle (M) to open the umbrella. Set the umbrella to 5 adjustable vertical tilt position by sliding sleeve.**





**Option:** If the umbrella is used on the wooden deck, tighten the screws (N) with the base and the deck to keep the umbrella stable.